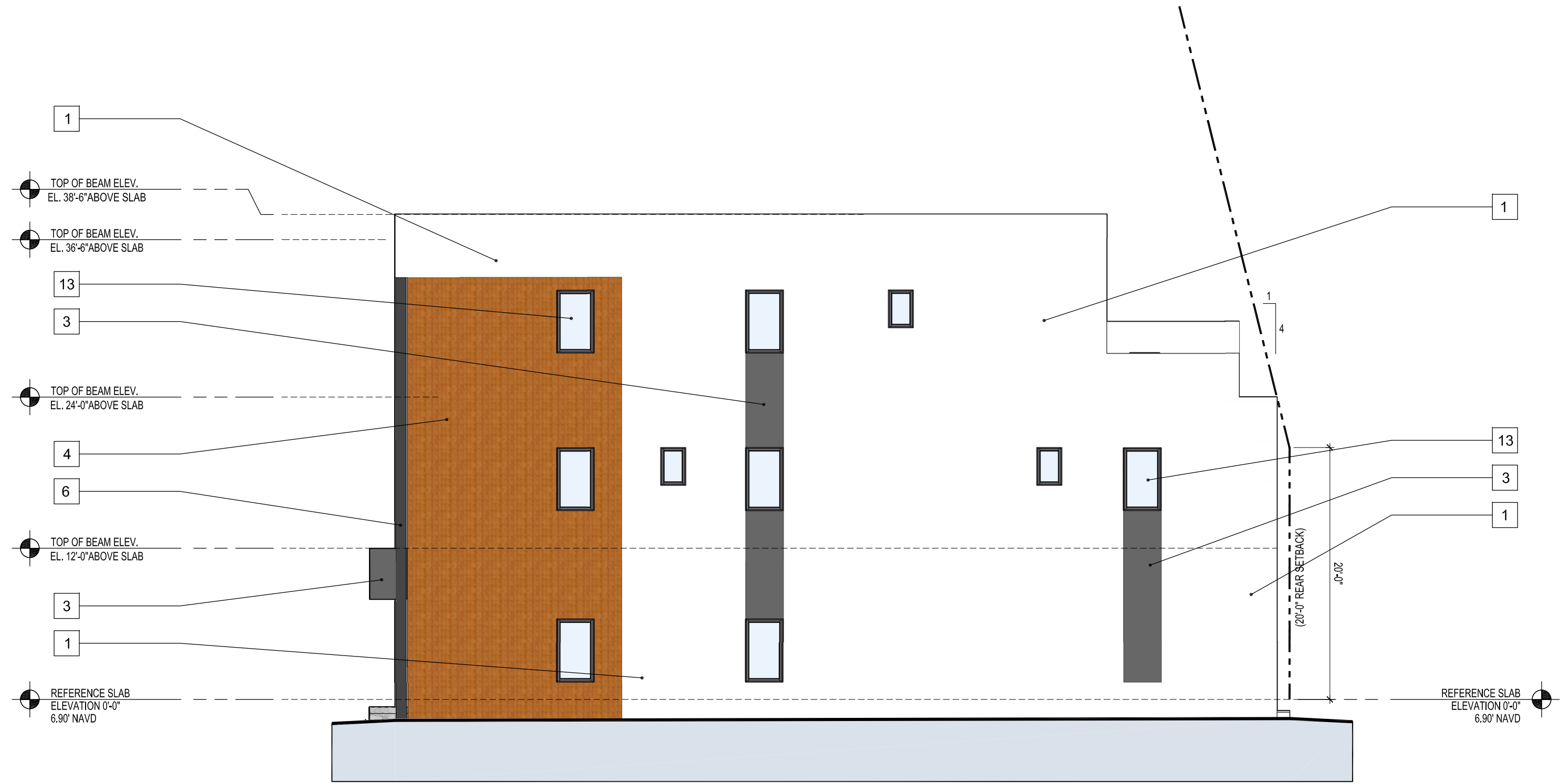


C:\Users\TiffanyR\OneDrive\Intel\Projects\25000\#25009 - 3305 SE 5th STREET TOWNHOMES - POMPANO BEACH - ALL 3 STORY UNITS.dwg, 4/28/2026 10:42:07 AM, AutoCAD



FRONT (SOUTH) ELEVATION

SCALE: 1/8" = 1'-0"



RIGHT SIDE (EAST) ELEVATION

SCALE: 1/8" = 1'-0"

ELEVATION LEGEND	
1	SMOOTH CEMENTITIOUS FINISH (COLOR: WHITE) OVER CMU WALL (TYP.)
2	TEXTURED CEMENTITIOUS FINISH (COLOR: LIGHT GRAY) OVER CMU WALL
3	TEXTURED CEMENTITIOUS FINISH (COLOR: DARK GRAY) OVER CMU WALL
4	PORCELAIN TILE WOOD GRAIN FINISH (COLOR: CHERRY) OVER MASONRY
5	MIN. 42" HIGH POWDER COATED ALUMINUM GUARDRAIL SYSTEM PER CODE (COLOR: BRONZE)
6	POWDER COATED ALUMINUM FINS (COLOR: DARK GRAY)
7	NOT USED
8	NOT USED
9	IMPACT RATED GLASS OVERHEAD GARAGE DOOR (FRAME COLOR: BRONZE)
10	IMPACT RATED SLIDING GLASS DOOR (FRAME COLOR: BRONZE)
11	IMPACT RATED SWING GLASS DOOR W/ SIDELITES (FRAME COLOR: BRONZE)
12	IMPACT RATED SWING GLASS DOOR (FRAME COLOR: BRONZE)
13	IMPACT RATED FIXED WINDOW (FRAME COLOR: BRONZE)
14	IMPACT RATED DOUBLE CASEMENT WINDOW (FRAME COLOR: BRONZE)
15	IMPACT RATED FIXED WINDOW SYSTEM W/ CASEMENT PANEL (FRAME COLOR: BRONZE)